



Meta Maya Construction Pty. Ltd.

RELEVANT EXPERIENCE

**Honest service
Quality construction
Professional result.**

RELEVANT EXPERIENCE AND EXPERTISE **META MAYA CONSTRUCTION**

Pilbara Meta Maya Regional Aboriginal Corporation (PMMRAC) and Meta Maya Construction (MMC)

Over the last 24 years, PMMRAC has had the privilege of working with Indigenous Communities across the Pilbara, Gascoyne and Murchison region of Western Australia. For the last 15 years we have been providing Municipal and Essential services (Civil), Property Management, Maintenance, Environmental and Tenant Support services to 29 remote Aboriginal communities and have a strong appreciation of the importance of providing reliable and sustainable services in regional and very remote locations.

At the foundation of our Construction Division is a client-focused, dedicated and experienced management group, who provide responsive support to their teams, from planning through to completion. Our core focus is to achieve the best construction solutions for our clients through guaranteed quality of work for Government, private developers and individuals. What sets us apart is our flexibility, rapid response and nationwide logistical and trade networks. Our pool of preferred loyal subcontractors, tradesmen and labour are ready for instant deployment, and where possible, the company utilises local suppliers and tradespeople, having over the years built a supplier network that understands our methods and requirements.

We put the safety of our workforce, clients and communities first, and our Quality, Safety and Environmental management system is well planned for specific projects and conducted to minimise any adverse effects on our people, our suppliers and the natural environment. With the help of our clients and passionate employees, we are creating a national construction business with a purpose for making long-term differences in national, regional and remote areas.



These are some of the Civil services we currently provide to our clients:

POWER ASSETS AND INFRASTRUCTURE SERVICES

- Remote Monitoring of Power and Water Infrastructure Assets
- Management of alarms and faults
- Preventative Maintenance on all assets to ensure they are fully operational
- Monitoring of water leaks on water infrastructure
- Diesel generator service, maintenance and repairs
- Diagnostic fault finding on Comap Intellivision 5 control systems
- Electrical installations
- Power line repairs and maintenance
- RCD, Emergency lighting and Portable test and tagging inspections
- Generator Load Testing and Oil Sampling
- Remote monitoring installation
- Generator installations and commissioning
- Radiator installations and commissioning
- Power generation control upgrades
- Air flow management
- Occupational Health & Safety upgrades to remote power stations
- Solar power installations
- Design and Construction of Roads
- Design and Construction of Swimming Pools
- Design and Construction of Waste Areas



WATER SUPPLY INFRASTRUCTURE SERVICES

- Record pump run hours, flow rates and accumulative production
- Monitor bore rest and pumping levels
- Water infrastructure servicing, maintenance and repairs
- Diagnostic fault finding of control systems
- Telemetry installation and set up
- Bore pump testing
- Air lifting of bores
- UV and Chlorine gas disinfection systems
- Ground tank installation
- WTP installation, service and maintenance
- Remote monitoring solutions
- Bore pump and generator installation
- Solar array bore pump installations
- Mains water installations
- Occupational Health and Safety upgrades to remote bore pump stations and Water compounds.

WASTE WATER INFRASTRUCTURE SERVICES

- Recorded pump run hours and flow rates
- Perform sewer pump testing
- Waste Water infrastructure servicing, maintenance and repairs
- Diagnostic fault finding on control systems
- Air scour of sewer rising mains to remove built up foreign matter
- Annual removal of silt and foreign matter from sewer pump station well
- Sewer pond sampling
- Monitor and inspect sewer pond levels
- Sewer mains installation
- Occupational Health & Safety upgrades to remote sewer pump stations
- Water Tank Levels (e.g. feed, product and elevated tanks)
- Bore Pump Status (e.g. run indication, fault indication, flowrate, well level and communication system status)
- Water Treatment Plant Status
- Flowmeters including usage, bore production and blend-line/bypass systems
- Chlorinator systems including chlorine residual levels, circulation and dose pump run and
- fault indication, no flow protection, chlorine gas leak detector (including auto-test to meet AS2927:2001), and gas cylinder weights
- Water Quality Analysis including Fluoride, Nitrate, pH, Conductivity and ORP
- Power monitoring including loss of power and quality issues with the supply (i.e. phase loss)
- to protect motors and other sensitive equipment.
- Backup power systems for both telemetry equipment and systems requiring continuous
- power (e.g. UV disinfection systems)
- Surge Protection status
- Enclosure Temperatures
- Coordinating water sampling as per schedule including coordination of subcontractors
- Management of Water sampling teams
- Correlation of all data with respect to water sampling
- Reporting to management and government bodies

*Innovative, smarter
solutions to get the
most from your budget.*



Through our management team, MMC has a wealth of experience globally in all facets of the building industry from small shop fit-outs, to Heritage Restorations, to Multi Storey Apartments and Commercial buildings. We specialise in Tilt Panel, Brick and Concrete, AFS, Modular Buildings and Steel and Timber Frame Construction.

MMC has recently completed a number of high profile fit-outs including sections of Ascot Racecourse including Bars and extensive external decking, two Guylain Chocolate Cafés, one in a Heritage Listed building on St Georges Terrace and the other in Parramatta NSW, Street Eats restaurant at the new Yagan Square, the refurbishment of the Leederville Hotel (Blue Flamingo) including the Car Park and Bottle Shop, new premises for H&R Block, two MiYU shops, one at the new Direct Factory Outlet (DFO) next to Perth Airport and one at the recently redeveloped Westfield Carousel, as well as a number of cafes and base buildings works throughout Perth.

MMC also recently completed the construction of a \$4.6 million shopping centre in Alkimos and the construction of the new DBCA Riverpark Node Project at John Tonkin Park. Additionally, MMC has just completed a \$435k Project for the demolition and construction of new sheds for the Department of Biodiversity Conservation and Attractions in Kensington as well as several packages of work to fit-out the new multimillion dollar Shire of Northam Aboriginal Environmental and Interpretive Centre in Northam.

Since inception we have strived to exceed our client's expectations and this is evidenced by the repeat business we receive and the impeccable references our clients provide at the end of each Project. Please find below further details on a selection of recent projects.



*Quality you
deserve and
dependability
you can count on.*

*Exceptionally qualified,
extensively experienced,
passionate people,
driving to make a
difference.*



Build, Manage, Maintain.

KENSINGTON SHEDS PROJECT

Kensington, Perth WA

The Project

The Department of Biodiversity, Conservation and Attractions was created on 1 July 2017, following the State Government's decision to bring together the Botanic Gardens and Parks Authority, Rottneest Island Authority, Zoological Parks Authority and the former Department of Parks and Wildlife.

The Department is committed to promoting biodiversity and conservation to enrich people's lives, through sustainable management of Western Australia's species, ecosystems, lands and the attractions in the department's care. Tenders were invited by the Director General for the execution of the following work.

Demolition

- Remove Asbestos from shed walls
- Demo Buildings & Make ready for Earthworks
- Air Monitoring performed by Meta Maya Group Pty Ltd

Earthworks & Car Park Works

- Investigate in ground service locations and identify all services
- Disconnect and remove Distribution Boards
- Remove Kerbs, Bitumen and existing soak well
- Remove 200mm of sub soil
- Install Electrical Conduits to buildings
- Install new soak wells
- Install and grade new limestone sub-base
- Install 5 new Concrete Slabs
- Install new Kerbs and Bitumen
- Re install distribution boards to new location
- Install Line marking

Shed Construction

- Erect sheds x 5
- Fit off electrical to all sheds (Lighting and Power)
- Seal Concrete Slabs x 5
- Commission Sheds x 5

Landscaping

A variety of modern Australian sun-hardy, water efficient plants finish the project, resulting in an environmentally friendly and visually appealing site.



Location: Kensington
Value: \$435,000
Duration: 12 weeks





Recent Projects



Agora Shopping Village

The Agora Project in Alkimos consists of 5000sqm of Commercial and Retail space made up of 5 individual tilt panel buildings and includes all Civil Works, Site Works, Storm Water System and Car Parking for 130 Car Parks.

Surrounded by established school and child care facilities, picturesque parks and open spaces, high quality new homes and young families. The centre is located within a busy new community and would suit medical, professional services, retail, specialty stores and more.

Location: Alkimos
Value: \$4,600,000
Duration: 9 months





Guylian Belgian Chocolate Cafe - Perth

An important heritage restoration and fit-out, the Guylian project was a labour of love. Restoring the stunning building to its original splendor and seeing the final results were nothing less than amazing.

Location: 101 St Georges Terrace, Perth WA 6000
Value: \$1,300,000
Duration: 16 weeks





Located in the heart of Perth CBD Guylian Chocolate Cafe boasts plush furniture and decor that oozes a relaxed but formal sophistication.

Indulge your passion for the finest Belgian chocolates, exquisite cakes and decadent desserts. Enjoy a glass of champagne or a coffee as you take a delicious journey of discovery. Experience the rich, luscious flavours that only Guylian promises. Delight in our extravagant petit fours and individual desserts.

Ideal for breakfast, lunch, an after work drink or even a shopping break – just indulge, enjoy, relax. The perfect spot to enjoy something delectable either before or after the theatre with friends.

Some information obtained from <http://guyliancafe.com.au>





Guylian Chocolate Cafe Parramatta

Full internal high class fit-out and heritage
restoration

| | |
|-----------|------------|
| Location: | Parramatta |
| Value: | \$550,000 |
| Duration: | 9 weeks |

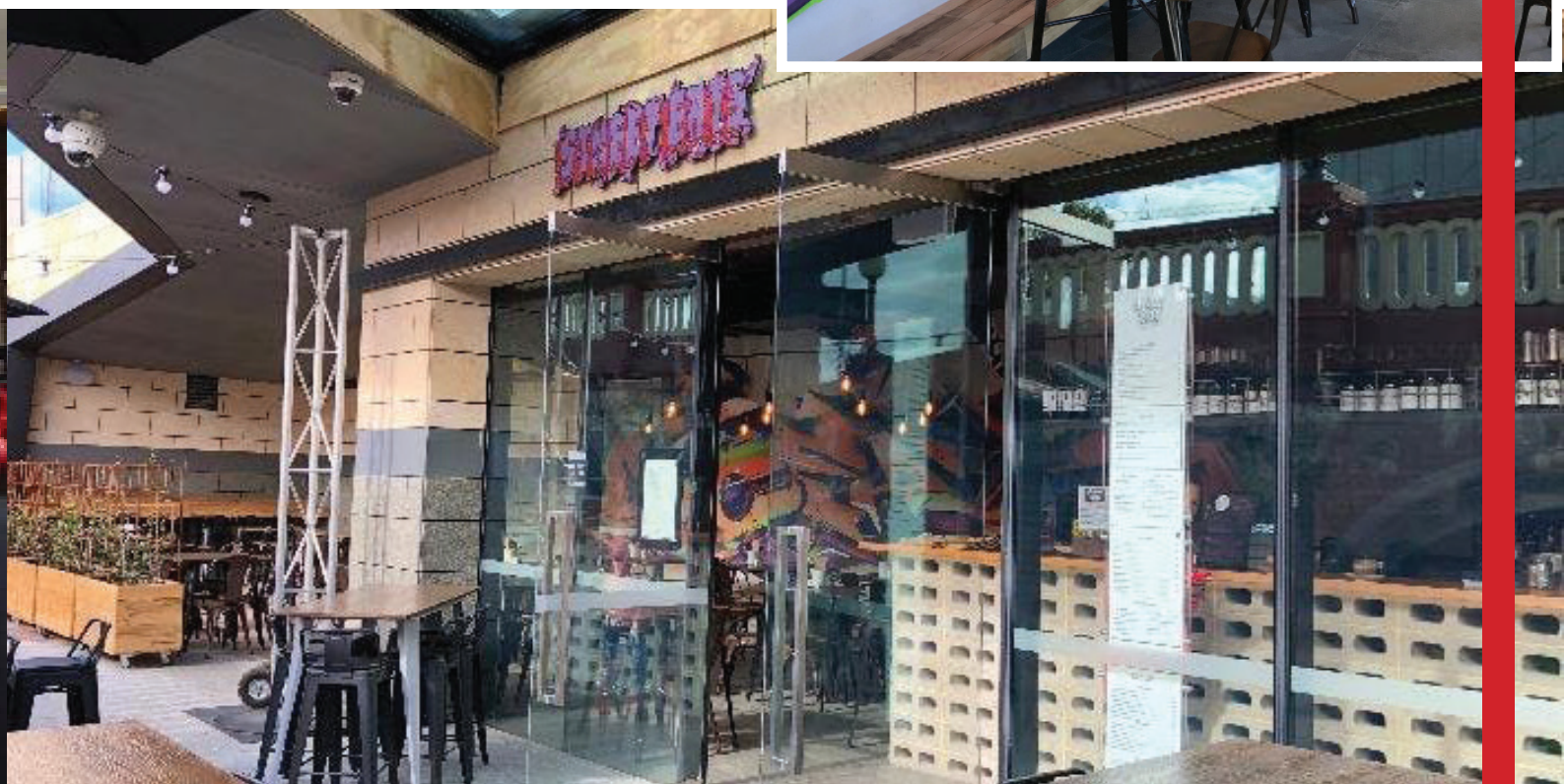




Street Eats

A modern and edgy eatery located in the City of Perth. Street Eats style is relaxed and chilled making it easy to relax while they serve you some of the worlds greatest street foods.

Location: Yagan Square
Value: \$280,000
Duration: 9 Weeks

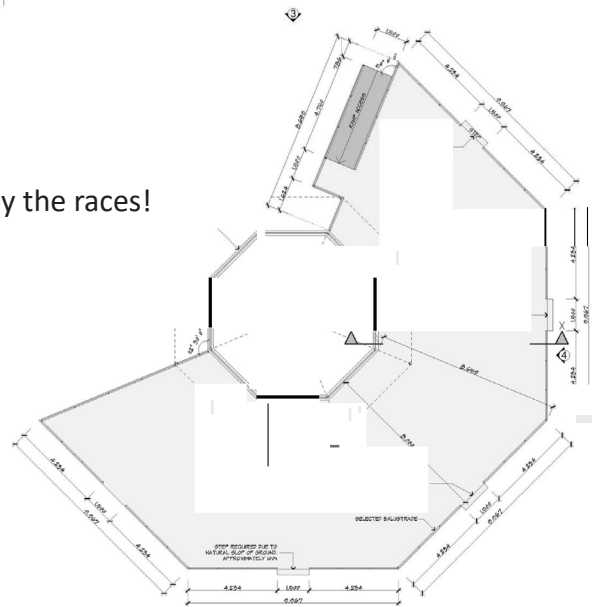




Ascot Decking and Pavilion Bar

The Ascot Bar is the ideal place to catch up with friends and enjoy the races!
Demolition and Construction of Decking and Pavilion Bar.
Demolition of various structures and Refurbishment of Pavillion
Public Bar Area and Stands.
Development Application and Building Permit was required
for these works.

Location: Ascot Racecourse
Value: \$223,000.00
Duration: 9 weeks





Restoration Project at the John Point lookout,
gun emplacement and observation post

Cape Peron

Location: Rockingham

Value: \$188,000

Duration: 12 weeks

Overlooking the Indian Ocean in Rockingham, the Cape Peron Coastal Defense Battery or "K" Battery begun late in 1942 but never fired an angry shot. The war zone soon moved away from Western Australia and the battery was decommissioned early in 1945.

The Cape Peron Battery consisted of two 155mm Guns, a large observation post and operations centre with bunkers for housing personnel, storage of ammunition etc. All were connected by subterranean tunnels.



Before Restoration



The Blue Flamingo

Location: 742 Newcastle St,
Leederville WA 6007

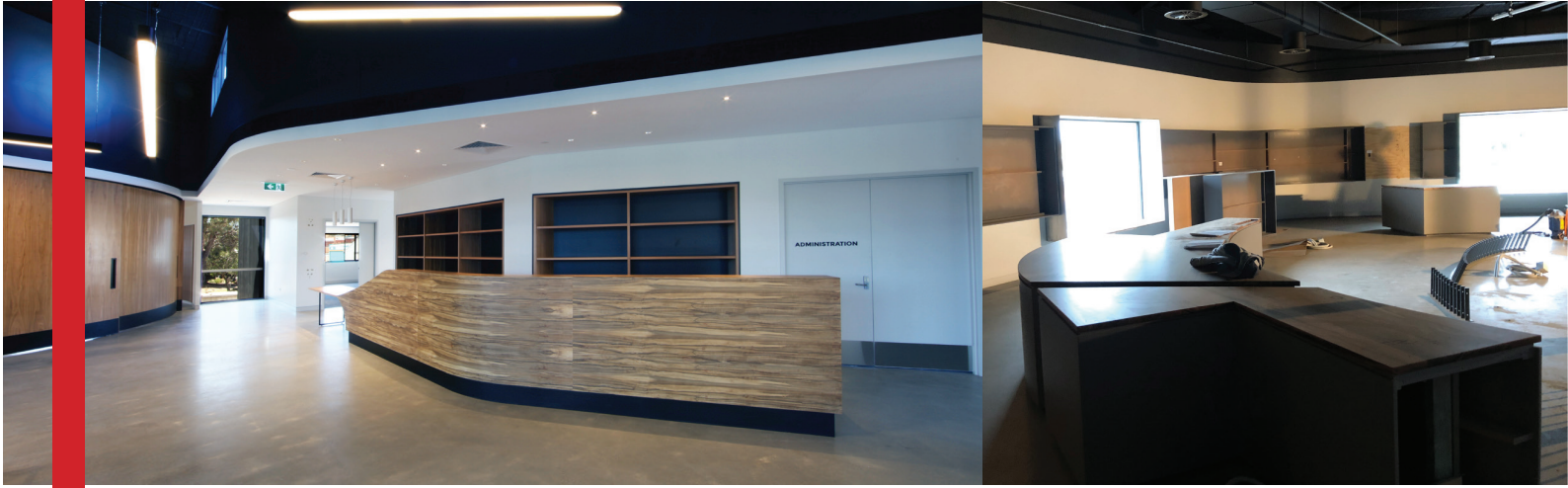
Value: \$188,000

Duration: 12 weeks

Inspired by South America and the Californian coast, this Leederville space has all your party needs sorted. With fun cocktails to refresh those tastebuds, plus delish eats to match – there's a reason this themed courtyard is one of Perth's fav social spots. Drinks, music and cages come and explore the paradise that is Blue Flamingo and dance like no one is watching.

Some information taken from - www.theblueflamingo.com.au





Northam Aboriginal Interpretive Centre

The Bilya Koort Boodja Centre for Nyoongar Culture and Environmental Knowledge is located in the Shire of Northam on the foreshore of the Avon River in Northam's CBD. This regional tourist attraction offers an interactive educational experience that recognises the rich Aboriginal and environmental presence in the Nyoongar Ballardong region. The Centre will protect, celebrate and share the culture of the Nyoongar people and highlight land management practices that draws upon the knowledge of the land's traditional custodians.

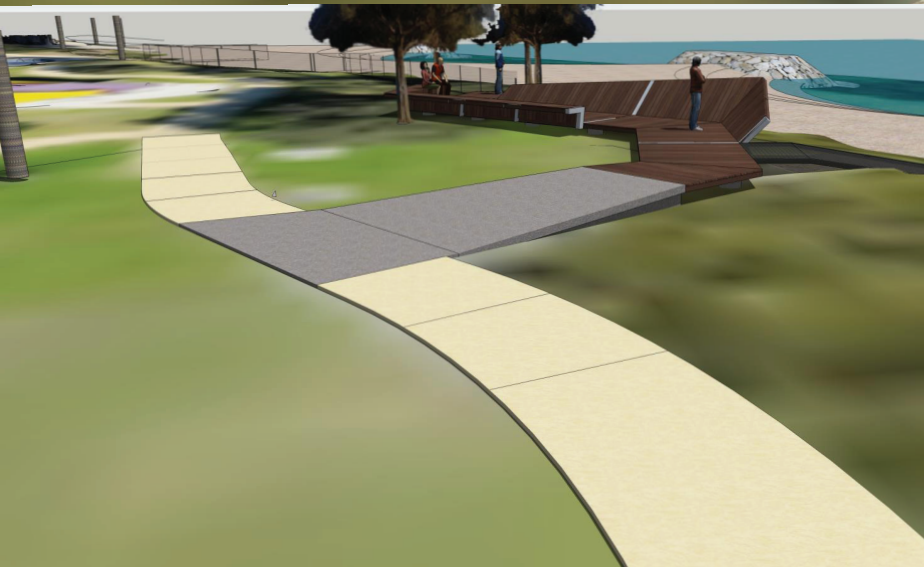
Location: Northam
Value: \$290,000
Duration: 8 Weeks



Committed to superior quality and results.



Information taken from the Bilya Koort Boodja website. <https://www.bilyakoortboodja.com/>



John Tonkin Interpretation Nodes

The interpretation nodes are structures that link into existing foreshore pathways, shaped to create a multi-use space providing seating, interpretation and improved foreshore access. The facilities are designed to meet universal access standards, which increases recreational opportunities for a range of abilities. The aim is to make visitors more aware of the natural, historic, social and Aboriginal heritage of the Riverpark.

The interpretation aspects of the node draw upon visual elements, sound and art to enable the visitor to engage with the information in a variety of ways. Besides static interpretive panels, where applicable the signage will also prompt visitors to download an app and listen to cultural heritage audio stories about the river, by accessing the virtual trail guides.

Location: Fremantle
Value: \$190,000
Duration: 3 months

Information taken from the
WA Parks Foundation Swan
Canning RiverPark Prospectus
[www.ourwaparks.org.au/
wp-content/uploads/2018/10/
WAPF-Swan-Canning-River-
park-Prospectus-2018.pdf](http://www.ourwaparks.org.au/wp-content/uploads/2018/10/WAPF-Swan-Canning-River-park-Prospectus-2018.pdf)



Construction you can count on.



Construction staff housing

Derby Housing

Location: Derby
Value: \$2,400,000
Duration: 6 months

Demolition of existing dwelling at Lot 1174 Holman Street Derby and Construction of 1 x 4 Bedroom Dwelling at Lot 103 Kurrajong Loop and 2 x 3 Bedroom Dwellings at Lot 1174 Holman Street Derby





Restoration works, signage and painting.

Fenians Bar

Location: Perth
Value: \$20,000
Duration: 1 Weeks

Ideally located on the corner of Adelaide Terrace and Hill Street, Perth's original Irish Pub is the place to meet for a quick drink or a great pub meal. It's also the perfect venue for your next function.





A modern, office fit-out complete with quiet spaces, tasteful, well equipped amenities and acoustic designed roof to reduce noise. Designed for the individual needs of the organisation's atmosphere and to assist in staff's ability to work effectively and efficiently.

Kensington Office fit-out

Location: Kensington
Value: \$400,000
Duration: 6 months





Perth's number one Japanese variety store. Two separate internal fit-outs, one at Westfield Carousel Cannington, the other inside the Direct Factory Outlet (DFO) located at the Perth Airport.

MiYU Store Fit-outs

Location: DFO
Value: \$80,000
Duration: 4 weeks

Location: Westfield Carousel
Value: \$60,000
Duration: 4 weeks



- Registered Building Contractor
- 100% Australian Owned
- Robust integrated QSE Systems
- 25 Years in business
- 90+ Personnel
- National Coverage
- Master Builder Member



FOR LEASE

BRAND NEW NEIGHBOURHOOD CENTRE RETAIL FOR LEASE

SUITABLE FOR:

- MEDICAL CENTRE
- DENTAL
- PHARMACY
- GYM
- CAFE
- NEWS AGENCY AND MORE

COLIN CHENG | 0402302280

Meta Maya Construction Pty Ltd

CONTACT

Address

Unit 5, 78-84 Catalano Circuit,
Canning Vale WA 6155

Phone

+61 8 9455 7441
1300 928 963

Email

construction@metamaya.com.au

Web

metamaya.com.au

