



**SOURCE combines sunlight + air to make, mineralize, and deliver a perfected supply of drinking water right to your tap.**

Operating across the world in a wide range of conditions from the arid Sonoran Desert to the humid equatorial mountains, SOURCE drinking water is safe and delicious. Without the energy storage challenges of traditional solar pv, SOURCE is self-contained and simple to install.

#### WATER INDEPENDENCE

SOURCE flows conveniently to your tap from infrastructure independent Hydropanels on your roof. Low-maintenance and always delicious, you own your water.

#### RENEWABLE

Powered by solar, SOURCE Hydropanels tap into the inexhaustible supply of fresh water in the atmosphere, eliminating plastic or water waste.

#### EVERY PERSON, EVERY PLACE

Whether it's dry or humid, SOURCE makes water for you and your family. From 2 panel to large arrays, SOURCE arrays are designed to make drinking water to meet your consumption needs.



HOMES



SCHOOLS



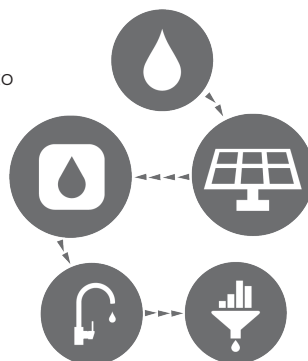
OFFICES

#### DRINKING WATER, PERFECTED

SOURCE Hydropanels make and mineralize pure water for taste and health benefits. Every morning when the sun comes up, you can have peace of mind knowing that your water supply is refreshed each day. Unlike municipal or bottled water, SOURCE is without waste.

#### HOW DOES SOURCE WORK?

- Water vapour from the ambient air around us is drawn into SOURCE via fans and adsorbed onto special material
- Pure water is desorbed into an air-tight system and is condensed inside SOURCE
- Liquid water flows into reservoir and is mineralized
- Drinking water passes through flavour polishing cartridge before being dispensed at the tap
- SOURCE Hydropanels are connected to a mesh network and are monitored for production and quality



#### HOW DO I GET SOURCE?

Wilco Electrical

Call: 08 6142 5404

Email: [admin@wilcoelectrical.com.au](mailto:admin@wilcoelectrical.com.au)

## Technical Specifications



#### FOOTPRINT

Each panel is 4 feet x 8 feet (1.2m x 2.4m) and a standard array contains 2 Hydropanels

#### CREATION OF WATER

Water vapor is pulled from the air with a system powered by solar and then converted into liquid water

#### WATER STORAGE

Each Hydropanel holds 30 litres (60 standard water bottles) in a reservoir where it is mineralized and kept clean for optimal taste and health. Standard arrays have 120 bottles of water storage capacity

#### DAILY PRODUCTION

Standard array averages 4-10 litres each day or 8-20 16.9 ounce standard water bottles, depending on sunlight and humidity. Array sizes are designed by modeled performance

#### POWER

SOURCE utilizes solar power and a small battery to enable water production when the sun shines and water delivery on cloudy days or at night

#### WATER QUALITY

Pure water is created from water vapour, leaving behind any pollutants in the air, and minerals are added; Follows EPA and FDA guidelines

#### MINERAL CARTRIDGE COMPOSITION

One cartridge in reservoir: calcium and magnesium  
Final finishing cartridge at tap: activated carbon

#### INSTALLATION OPTIONS

SOURCE certified installer configures to meet customer needs, mounted on roof

#### ENERGY USAGE

SOURCE is fully self-sustained and off-grid

#### DELIVERY

Water is delivered to a tap, fridge, or wall-mounted dispenser from pump at 80 psi

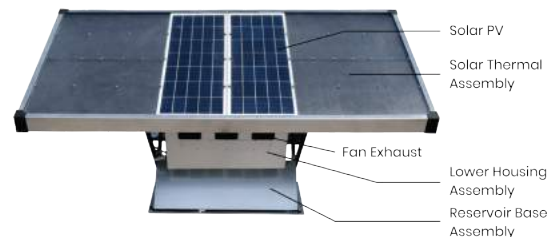
## How does SOURCE work?

SOURCE Hydropanels harness the power of the sun to create a drinking water solution free from infrastructure, lengthy supply chains or transportation risk. SOURCE ensures the human right to clean water by providing the first ever path to complete drinking-water ownership.



- Ambient air is drawn into SOURCE via fans and water vapour in the air is adsorbed onto our specialty hygroscopic material
- The water vapour is collected as the airflow passes through a condenser and the resulting liquid water flows into the onboard reservoir
- The collected water is mineralized for optimal health/taste and treated (with Ozone) to maintain optimal water quality over time
- Water is pumped through a polishing cartridge prior to being dispensed to the customer
- Each Hydropanel is connected to a network and is monitored for performance and quality parameters

Panel Front View

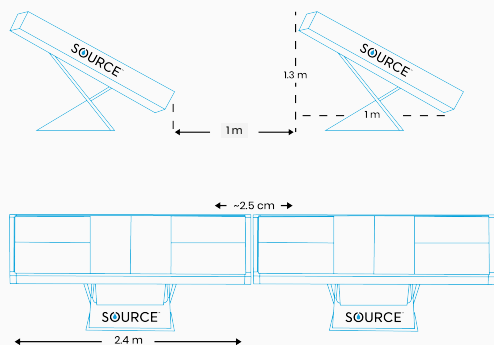


Panel Rear View



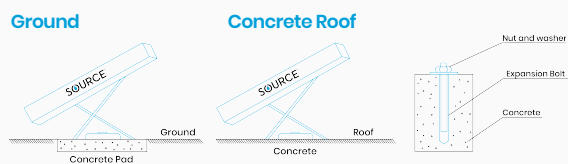
## Installation

### BASIC ARRAY DIMENSIONS



Weight: 320 lbs.

### PANEL MOUNTING



### SAMPLE INSTALL SPECIFICATIONS

Location	Install Angle	Max Wind Speed Reqs	Mounting Options	Anchor Size/Type
Phoenix, Arizona, USA	40	180 KPH	Truss (w/ strut)	3/8"X 3" Galv. Lag bolts (8)
			Ground/Concrete Roof	3/8"x3" expansion anchor
Mexico City, Mexico	30	135 KPH	Truss (w/ strut)	3/8"X 3" Galv. Lag bolts (8)
			Ground/Concrete Roof	3/8"x3" expansion anchor
Manilla, Phillipines	15	270 KPH	Truss (w/ strut)	3/8"X 3" Galv. Lag bolts (8)
			Ground/Concrete Roof	3/8"x3" expansion anchor

\* Ballast available upon request

- SOURCE water is delivered to the dispenser through a 3/8" tube shielded from exterior environment by protective conduit when necessary
- Water pressure is provided by an 80psi rated pump powered by a rechargeable battery for continuous operation

## World-Class Reliability

IEC 61215 Equivalency Testing:

- Solar Thermal Assembly Temp cycling and damp Heat tested to 16+ years
  - Lower Housing Assembly temp cycling and damp Heat to 29+ years
  - Internal components temp cycling and damp Heat to 20+ years
  - Reservoir-Base Assembly temp cycling and damp Heat to 37+ years
- Passes EPA air quality testing:
- EPA analysis testing methods 8260, 8270C\_SIM, 8015D

## Network Operations Center

- Each SOURCE Hydropanel is connected to the Zero Mass Water Network Operations Center (NOC)
- Data is returned from each Hydropanel to the NOC and stored in the cloud with redundancy
- Hydropanel performance is remotely optimized using machine learning
- The NOC resolves any alerts remotely or deploys the field service team as needed
- Cellular Module is FCC, ANATEL, and IC certified
- Hydropanels are optimized to hibernate in freezing temperatures to protect pump and return to full operation when safe to do so

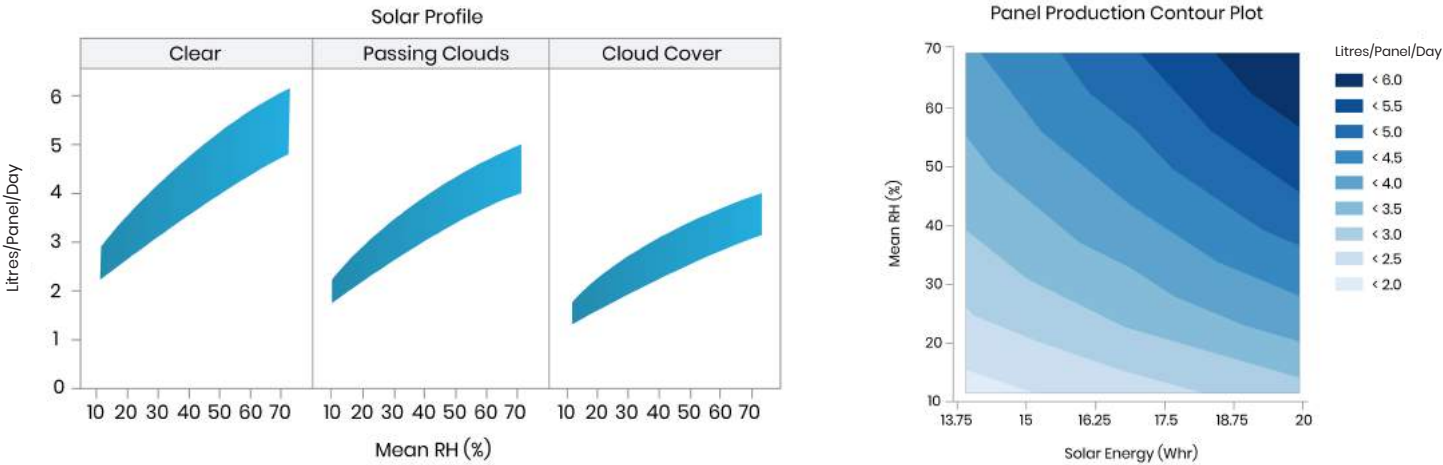
## Recommended Maintenance

Air Filter	6 Months
Water Filter	Every Year
Mineral Cartridge	Every 5 Years

Hydropanel Life	15+ Years
Standard Warranty	1 Year
Service & Monitoring (Extended Warranty)	Available Upon Request

Water Production

Production of water by SOURCE panels is dependent on local measures of relative humidity (RH) and solar energy (kWh). SOURCE Hydropanels produce an average of 2-5 Litres of water daily.



The Highest Commitment to Water Quality

By design and as tested, SOURCE water quality is not impacted by air quality.

	Parameter	US EPA Limit	SOURCE Standard of Excellence	SOURCE Test Result
Microbial Parameters	Escherichia coli - MPN/100mL	0	0	Not Detected
	Coliform, Total - MPN/100mL	0	0	Not Detected
	2 Others	-	-	Not Detected
Inorganic/Chemical Parameters	Alkalinity	Not Established	10-250	10-94
	Bicarbonate Alkalinity	Not Established	10-250	10-94
	Calcium	Not Established	0-30	2.4-23
	Total Dissolved Solids	500**	20-250	20-240
	Hardness as Calcium carbonate	Not Established	< 200	6.0-100
	Magnesium	Not Established	0-30	Not Detected-11*
	Silica	Not Established	Not Established	Not Detected-2.0*
	Turbidity - NTU	1.0**	0-2.5	0.29-1.7
	Nitrate as N	10	10 (Nitrate-N)	0.16-7.2
	Silver	0.1**	0.01	Not Detected-0.086*
	Barium	2	0.7	0.0027 - 0.017
	Nickel	Not Established	0.02	Not Detected-0.0060*
	pH - SU	6.5-8.5	6.5-9.0	>7
	Sodium	None	150	Not Detected-5.2*
	Copper	1.0**	1.0	Not Detected-0.0027*
	Uranium	0.03	0.017	Not Detected-0.0016*
	Aluminum	0.05-0.2**	0.2	Not Detected-0.11*
	Zinc	5.0**	3	Not Detected-0.017*
	Nitrite as N	1	1 (Nitrite-N)	Not Detected-0.63*
	31 Others	-	-	Not Detected
Volatile/Semi-Volatile Parameters	Benzene	0.005	0.001	Not Detected
	Toluene	1	0.7	Not Detected
	138 Others	-	-	Not Detected
Radiochemical Parameters	Gross Alpha	15	13.5	Not Detected
	Radium 226 - pCi/L	5	5	Not Detected
	Radium 228 - pCi/L	5	2.7	Not Detected
	Gross Beta	4	4	Not Detected
Miscellaneous Parameters	Asbestos - MFL	7	7	Not Detected
	1613B - Dioxin	3x10-8	3x10-8	Not Detected
	8 Others	-	-	Not Detected

\* Range represents min and max test result of ZMW's routine water monitoring and testing  
\*\* Secondary standard - non-mandatory water quality standards set by the US EPA

**Application:** SOURCE for Commercial Spaces

**Site Name:** Array Energy

**Location:** Gold Coast, Queensland

**Installation Method:** Rooftop

**Array Size:** 2 Hydropanels



## Project Overview

Array Energy is an approved SOURCE distributor and a qualified SOURCE installer based in Burleigh Heads, Queensland. Partnering with Array Energy, Zero Mass Water has brought a renewable drinking water solution to the Array Energy head office. Additionally, SOURCE provides delicious drinking water for customers, key stakeholders, and of course, the Array Energy staff! Over its lifetime, this SOURCE array will offset over 40,000 plastic water bottles.

This project received funding as part of ARENA's Advancing Renewables Program.



**Application:** SOURCE for Retail

**Site Name:** Bing Lee

**Location:** Belconnen, New South Wales

**Installation Method:** Rooftop

**Array Size:** 6 Hydropanels



## Project Overview

Bing Lee Electrics, a major retailer of electric appliances in New South Wales, Australia, has partnered with Zero Mass Water to bring SOURCE Hydropanels to retail stores in Sydney, Belconnen and Taree. Demonstrating first in the world, off-grid technology, SOURCE provides water samples for Bing Lee visitors and staff to enjoy. On the Bing Lee showroom floor, customers can learn more about the benefits and impact of SOURCE and purchase the technology. Over its lifetime, this SOURCE array will offset over 120,000 plastic water bottles.

This project received funding as part of ARENA's Advancing Renewables Program.

**Application:** SOURCE for Retail

**Site Name:** Bing Lee

**Location:** Old Guildford, New South Wales

**Installation Method:** Rooftop

**Array Size:** 8 Hydropanels



## Project Overview

Bing Lee Electrics, a major retailer of electric appliances in New South Wales, Australia, has partnered with Zero Mass Water to bring SOURCE Hydropanels to retail stores in Sydney, Belconnen and Taree. Demonstrating first in the world, off-grid technology, SOURCE provides water samples for Bing Lee visitors and staff to enjoy. On the Bing Lee showroom floor, customers can learn more about the benefits and impact of SOURCE and purchase the technology. Over its lifetime, this SOURCE array will offset over 160,000 plastic water bottles.

This project received funding as part of ARENA's Advancing Renewables Program.

**Application:** SOURCE for Retail

**Site Name:** Bing Lee

**Location:** Taree, New South Wales

**Installation Method:** Rooftop

**Array Size:** 4 Hydropanels



## Project Overview

Bing Lee Electrics, a major retailer of electric appliances in New South Wales, Australia, has partnered with Zero Mass Water to bring SOURCE Hydropanels to retail stores in Sydney, Belconnen and Taree. Demonstrating first in the world, off-grid technology, SOURCE provides water samples for Bing Lee visitors and staff to enjoy. On the Bing Lee showroom floor, customers can learn more about the benefits and impact of SOURCE and purchase the technology. Over its lifetime, this SOURCE array will offset over 80,000 plastic water bottles.

This project received funding as part of ARENA's Advancing Renewables Program.



**Application:** SOURCE for Rural Farms

**Site Name:** Elmswood Farm

**Location:** Hunter Valley, New South Wales

**Installation Method:** Ground Mounted

**Array Size:** 2 Hydropanels



## Project Overview

Elmswood Farm is an organic, biodynamic farm located on 10,000 acres in the beautiful Hunter Valley. Seeking a drinking water solution that would supplement their existing rainwater tank, the owners of Elmswood Farm's now enjoy high-quality, delicious and renewable drinking water. Aside from the taste and health benefits, installing SOURCE Hydropanels has eliminated the inconvenience of buying bottled water and has provided an innovative drinking water solution in an area that is without traditional drinking water infrastructure. Over its lifetime, this SOURCE array will offset over 40,000 plastic water bottles.

This project received funding as part of ARENA's Advancing Renewables Program.



**Application:** SOURCE for Communities

**Site Name:** Gundy Soldiers' Memorial Hall

**Location:** Hunter Valley, New South Wales

**Installation Method:** Rooftop

**Array Size:** 8 Hydropanels



## Project Overview

Relying on bottled water, untreated water tanks, boreholes and the local river, the town of Gundy, New South Wales, was in need of a sustainable solution that leapfrogs traditional drinking water infrastructure. The installation of SOURCE Hydropanels at the Gundy Soldiers' Memorial Hall provide safe, reliable and delicious drinking water for the community to enjoy. Boosting community resilience, SOURCE Hydropanels will offset over 160,000 plastic water bottles over the lifetime of the array.

This project received funding as part of ARENA's Advancing Renewables Program.

**Application:** SOURCE for Eco-Tourism

**Site Name:** Lady Elliot Island

**Location:** Great Barrier Reef, Queensland

**Installation Method:** Ground Mounted

**Array Size:** 8 Hydropanels



## Project Overview

Located at the southern tip of the Great Barrier Reef, Lady Elliot Island is a tropical island oasis that provides visitors the opportunity to explore one of the Seven Wonders of the Natural World and enjoy the warm weather and local marine beauty. The installation of eight SOURCE Hydropanels at the site now provides Lady Elliot island with an off-grid supply of clean and delicious drinking water. Over its lifetime, this SOURCE array will offset over 160,000 plastic water bottles.

This project received funding as part of ARENA's Advancing Renewables Program.

**Application:** SOURCE for Communities

**Site Name:** Macarthur Centre for Sustainable Living

**Location:** Mount Annan, New South Wales

**Installation Method:** Ground Mounted

**Array Size:** 10 Hydropanels



## Project Overview

The Macarthur Centre for Sustainable Living (MCSL) is a beacon of sustainability and community within the thriving western suburbs of Sydney, Australia. MCSL is proudly sponsored by the Macarthur Councils - Campbelltown City Council, Camden Council, Wollondilly Shire Council and The Australian Botanic Gardens. Hosting around 30,000 visitors per year, the community-run facility showcases the latest in sustainable living initiatives, including the installation of ten SOURCE Hydropanels. Today SOURCE provides clean, high-quality drinking water for MCSL and offsets up to 200,000 plastic water bottles over its lifetime.

This project received funding as part of ARENA's Advancing Renewables Program.



**Application:** SOURCE for Schools

**Site Name:** Mary's Mount School

**Installation Method:** Perth, Western Australia

**Application:** Rooftop

**Array Size:** 4 Hydropanels



## Project Overview

With the installation of four SOURCE Hydropanels, Mary's Mount School in Perth, Western Australia, now provides clean, renewable drinking water for students and staff to enjoy. Supporting their education with ultimate hydration, SOURCE advances the schools desire to offset bottled water and serves as an educational opportunity for students to learn about sustainability and innovation. Over its lifetime, this SOURCE array will offset over 80,000 plastic water bottles.

This project received funding as part of ARENA's Advancing Renewables Program.

**Application:** SOURCE for Commercial Spaces

**Site Name:** Morlife Functional Foods

**Location:** Gold Coast, Queensland

**Installation Method:** Rooftop

**Array Size:** 10 Hydropanels



## Project Overview

Morlife Functional Foods is a leading producer of organic and health foods, providing simple nutritional solutions for customers in Australia and around the world. They provide nutritious, delicious and convenient superfoods that are specifically designed for each individual's needs. At Morlife's Gold Coast facility, the installation of ten SOURCE Hydropanels provides clean, delicious drinking water to Morlife employees and customers to enjoy. Additionally, this SOURCE array will offset up to 200,000 plastic water bottles over its lifetime.

This project received funding as part of ARENA's Advancing Renewables Program.

**Application:** SOURCE for Rural Homes

**Location:** Crookwell, New South Wales

**Installation Method:** Ground Mounted

**Array Size:** 5 Hydropanels



## Project Overview

At this rural property in Crookwell, New South Wales, the homeowner was seeking an additional drinking water solution to supplement their existing supply from a rainwater tank. Since installing SOURCE Hydropanels at the property, the owners now enjoy high- quality, delicious and renewable drinking water, while continuing their use of rainwater for showers, toilets and other domestic uses. In addition to the taste and health benefits that SOURCE provides, this SOURCE Hydropanel array will offset up to 100,000 plastic water bottles over its lifetime.

This project received funding as part of ARENA's Advancing Renewables Program.



**Application:** SOURCE for Commercial Spaces

**Site Name:** Western Australian Police Force

**Location:** Joondalup, Western Australia

**Installation Method:** Rooftop

**Array Size:** 8 Hydropanels



## Project Overview

The Western Australian Police Force is demonstrating the application of SOURCE Hydropanels as part of a search for practical and sustainable ways to serve their community. The installation of eight SOURCE Hydropanels provide clean, renewable drinking water while offsetting up to 160,000 plastic water bottles over the lifetime of the array.

This project received funding as part of ARENA's Advancing Renewables Program.

**Application:** SOURCE for Commercial Spaces

**Site Name:** Western Australian Police Force

**Location:** Perth, Western Australia

**Installation Method:** Rooftop

**Array Size:** 4 Hydropanels



## Project Overview

The Western Australian Police Force is demonstrating the application of SOURCE Hydropanels as part of a search for practical and sustainable ways to serve their community. The installation of eight SOURCE Hydropanels provide clean, renewable drinking water while offsetting up to 80,000 plastic water bottles over the lifetime of the array.

This project received funding as part of ARENA's Advancing Renewables Program.

**Application:** SOURCE for Commercial Spaces

**Site Name:** Wilco Electrical

**Location:** Perth, Western Australia

**Installation Method:** Rooftop

**Array Size:** 2 Hydropanels



## Project Overview

Wilco Electrical is an approved SOURCE distributor and a qualified SOURCE installer based in Perth, Western Australia. Partnering with Wilco Electrical, Zero Mass Water has brought a renewable drinking water solution to the Wilco Electrical head office. Additionally, SOURCE provides delicious drinking water for customers, key stakeholders, and of course, the Wilco Electrical staff! Over its lifetime, this SOURCE array will offset over 40,000 plastic water bottles.

This project received funding as part of ARENA's Advancing Renewables Program.



**Application:** SOURCE for Communities

**Site Name:** Wirrpanda Foundation

**Location:** Perth, Western Australia

**Installation Method:** Rooftop

**Array Size:** 4 Hydropanels



## Project Overview

A majority Aboriginal-owned company based in Perth, Western Australia, the Wirrapanda Foundation is a partner of Zero Mass Water and Wilco Electrical, and an approved distributor and installer of SOURCE. Committed to providing employment opportunities for indigenous communities, the Wirrapanda Foundation and Wilco Electrical have partnered with Zero Mass Water to improve the reliability and sustainability of drinking water in remote Aboriginal communities. Over its lifetime, this SOURCE array will offset over 80,000 plastic water bottles.

This project received funding as part of ARENA's Advancing Renewables Program.

**Application:** SOURCE

**Site Name:** Meta Maya Construction (MMC) and Meta Maya Group (MMG) Headquarters

**Location:** Perth, Western Australia

**Installation Method:** Rooftop

**Array Size:** 2 Hydropanels



### Project Overview

Meta Maya Construction (MMC) and Meta Maya Group (MMG) are two wholly owned subsidiaries based in Perth, of Pilbara Meta Maya Regional Aboriginal Corporation ("PMMRAC") a 100% privately owned, not for profit, Western Australian Aboriginal organisation based in Port Hedland in the Pilbara Region.

MMC has partnered with Zero Mass Water to bring SOURCE Hydropanels to Perth and Regional Western Australia.

MMC offers services around any type of construction build with MMG offering services around asbestos and hazardous materials, with both companies delivering solutions to both Government and the Corporate sector.

Over its lifetime, this SOURCE array will offset over 40,000 plastic water bottles.  
This project received funding as part of ARENA's Advancing Renewables Program.



**Distributors: Wilco Electrical**

E: [admin@wilcoelectrical.com.au](mailto:admin@wilcoelectrical.com.au)

W: [www.wilcoelectrical.com.au](http://www.wilcoelectrical.com.au)



**Installation and Maintenance:  
Meta Maya Construction Pty Ltd**

E: [enquiries@metamaya.com.au](mailto:enquiries@metamaya.com.au)

W: [www.metamaya.com.au](http://www.metamaya.com.au)

currently servicing WA, NT and SA